



Co-op Academy
Bebington





Co-op Academy
Bebington



New to Year 7 Evening





Co-op Academy
Bebington

Welcome to Co-op Academy Bebington

Ms Catherine Kelly

(Head Teacher and mum!)

Ofsted Rated Good in ALL Areas

Overall Effectiveness	Good
Quality of Education	Good
Behaviour and Attitudes	Good
Personal Development	Good /considered Outstanding
6th Form	Good
Leadership and Management	Good /considered Outstanding

Our aims: Exceptional in all areas at the next inspection



Shaping Exceptional Futures

	Co-op Academy Bebington	Co-op
1	Placing our students at the heart of everything we do.	Do what matters most.
2	Removing the barriers to learning so that all students and staff are provided with a vision of what they can be and supported to achieve that vision.	
3	Recognising and celebrating student achievement, academically, socially, physically, mentally and inclusively.	Succeed together.
4	Encouraging everyone in the school community to excel and achieve, in whatever form that may take.	
5	Providing our students with an aspirational vision for their future and the appropriate learning pathway.	
6	Being relentless in our determination for each others' success.	
7	Respecting everyone in the whole school and local community, so that we are recognised as a family school within an extended community, which supports and cares for each-other.	Show you care.
8	Embracing healthy living so that all are physically, emotionally and mentally enabled to excel and achieve their dreams.	Be yourself, always.



Co-op Academy
Bebington

My Intentions for the school....

- Maintain and develop our Ofsted judgement of good in all areas
- Continue to be the school of choice in the area -this year 532 applications for 205 places in Year 7 -well done for getting a place!
- Maximise the impact of our new systems so that we achieve GCSE results in line with expectations -our results have gone up year on year
- Continue to develop our unique curriculum
- Continue to deliver Health and Well-being /Pastoral care
- Improve further, the learning environment
- Maintain and develop the family and community ethos
- Be better at telling the good news story



What will your son/daughter get from us?

- Teaching that is well planned and extends learning
- Targets and tracking –intervention if they 'fall'
- Lots of extra-curricular opportunities
- Staff who genuinely care -'go the extra mile'
- Outstanding pastoral care
- Ethos of achievement and highest expectations
- Staff professional conduct
- Aim –a happy child is a child who thrives and learns
- Support and guidance from year 7 to move onto a positive destination post 16 or 18



My 'Red Lines'

- Uniform Infringements
- Bullying and physically hurting students or staff
- Swearing at staff or each other
- Refusal to do as requested...the 'no' issue
- Parents who refuse to support school or attend meetings
- Truantiing lessons/wandering around

Our standards in terms of behaviour are extremely high



What do I want.....

- Every student, regardless of ability or background, to experience an outstanding education;
- Every student to have an outstanding role model –professional, kind, knowledgeable, interested in the student;
- Every student to be shown how to learn, encouraged to work hard and become independent, resilient learners;
- Every student to achieve outcomes that are the very best for them;
- Every student to leave school with good memories, sound morals and to become good citizens who make a positive contribution to the lives of others



Co-op Academy
Bebington

Mr Phil Moore

Deputy Head Teacher
Behaviour and Attitudes



Co-op Academy
Bebington

Unique Opportunities

- Health and Well Being is a big focus area-Ex Sports College
- 'Beb Fest'/School Band/School Play
- Drama Club/Dance Club/School Play/Art Beat
- Bikeability/Swimming- Yr7
- Homework club- supports students/families
- Trips/Education Visits/ Residential visits
- Work experience in year 10 and 12
- Access to a full time careers advisor from year 7
- Honours Programme- STEM/REACH
- Farm/Construction/Motor Vehicle-courses for students
- Duke of Edinburgh
- Whole host of subject specific clubs
- Star Wars/Manga clubs etc
- We are very proactive in raising money for good causes- Claire House, Teenage Cancer Trust, Clic Sargent, New Ferry appeal etc. Santa dash, Bake off etc. led by students.



Behaviour- See the website-Positive Behaviour Policy

- Culture of high standards and expectations.
- This is a place of learning so poor behaviour will be challenged- you have signed a contract- support us.
- We will sanction students who misbehave to and from school – it's in our policy. We use CCTV.
- Classroom expectations- around equipment, manners, work ethic etc.
- 96% (355 surveyed)parents say behaviour is good.
- Permanently excluded 9 this yr - exclusions are fair as we feel we have exhausted all avenues of support- everyone has a right to learn!! Reasonable adjustments vs unreasonable??



Co-op Academy
Bebington

Uniform/Jewellery

- School uniform suppliers- Wirral Uniform Birkenhead 647 9588.
- The uniform suppliers have left information on the website, do not go elsewhere as it may be wrong. Order things now
- What is a shoe? We allow *Plain black leather footwear* no logos, shiny surfaces or colours. See website for guidance
- Watches allowed and one pair of gold or metal studded earrings allowed in the lobe.
- No outrageous haircuts/dyed in natural colours- nothing below a 3 if shaved.
- No false nails/eyelashes/nail varnish/nail varnish natural colours etc.



Mobile Phones/Social Media

- Mobiles not to be seen or on in school- unless staff ask for them to be used for Educational purposes.
- 1st time confiscated and returned.
- 2nd time confiscated and parents have to collect
- 3rd time banned from school- we will search.
- Social Media- all sites are illegal (until 13 yrs. Most 18yrs) but students are still using them.
- Bain of our lives- most problems in school start through Social Media.
- Issues that happen at home or on weekends. We will not deal with issues outside of school, go to the police or better still come off sites altogether.
- We continue to educate youngsters about the dangers of using unprotected sites- Snapchat ghost mode.



Co-op Academy
Bebington

Attendance/Punctuality

- Government target is 95% ours is 100%.
- The impact of erratic attendance is massive(see signs in school).
- 90% or below is the warning figure for Persistent absence- parents will be fined or prosecuted by Education Social Welfare Officer.
- We have fined more parents than any other school on the Wirral over 170 this year.
- Holidays and appointments outside school hours if possible- we will use fixed penalty notices for unauthorised breaks.
- Lates. 15 min at lunch or 45 min detention after school each day if students are late without good reason. Offenders are often dropped off by parents. Again we can fine for this- legally your responsibility to get children in on time. Students should be through the doors by 8.30 to make form time.
- Note: School has the legal right under the 2008 Education Act to detain any student who breaches rules for upto 1 hr for detention.....the law says we do not need to even give notice...but we try to!!
- Note: Nurses from the Community Immunisation Team here tonight to give info about vaccinations....helps avoid range of illnesses!!



Co-op Academy
Bebington

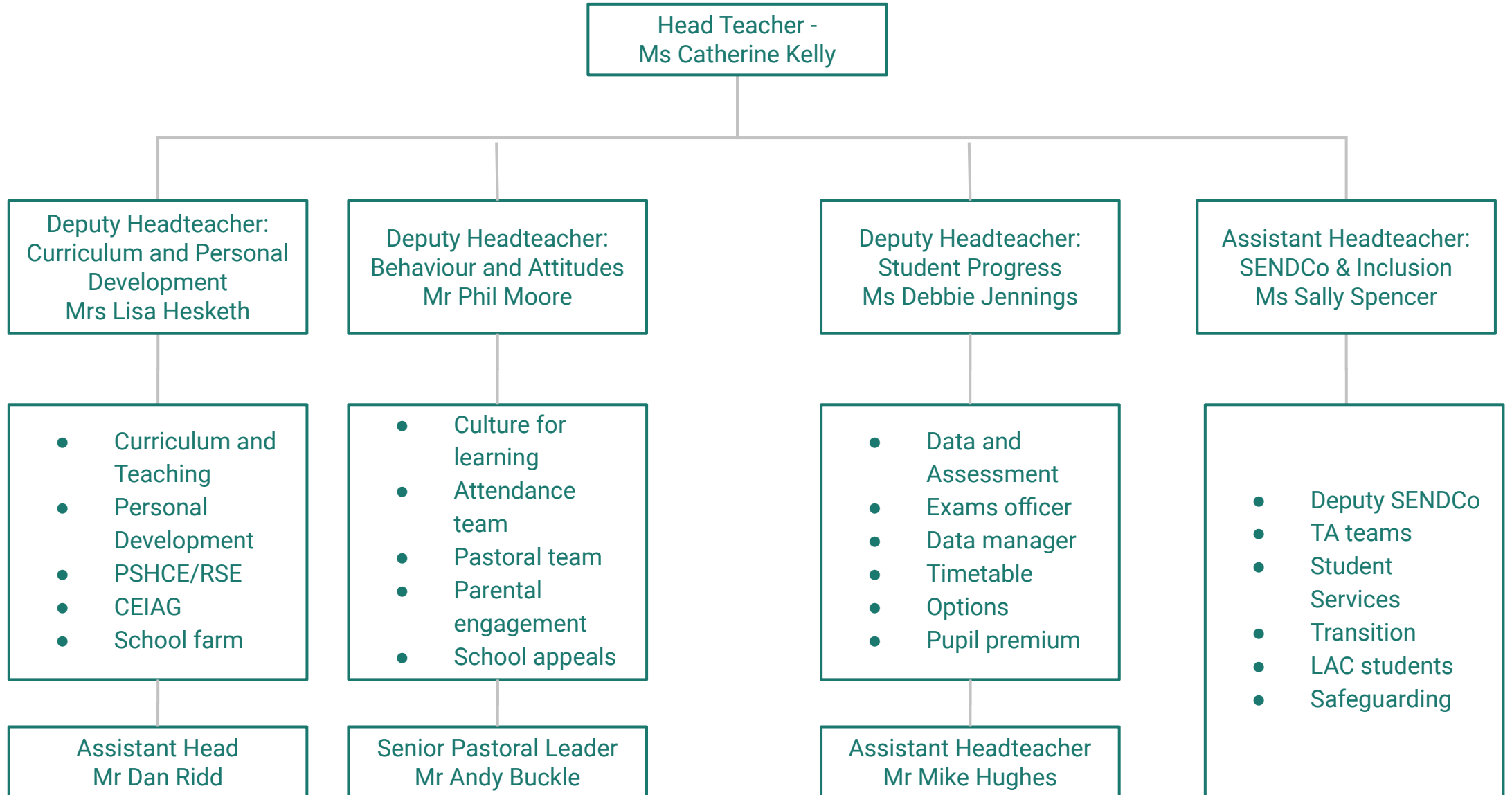
Parental Support Is a Non Negotiable.

We are full once again and we will hold appeals throughout the year.

We will not prevaricate on rules/expectations. The home school agreement outlines what we can expect from each other. It is a partnership but we absolutely expect parents to engage with school by

- Attending all Parents' Evenings and requested meetings
- Taking an active role in supporting home learning
- Abiding by the rules and reinforcing them at home
- Speak to the school if there is an issue- don't resort to social media. We will get it wrong but not on purpose. We do our best!

If you don't agree we are not the right school for you or your child.





Co-op Academy
Bebington

Pastoral Team- Key Staff

Catherine Kelly
Head Teacher

Sally Spencer
AHT/SENDCO

Julia Sleeth/Shereen Hayes
Safeguarding Lead

Phil Moore
Deputy Head Teacher

Mike Hawkins
Yr7 Pastoral Leader

Cath Payne
Yr 8 Pastoral Leader

Rebecca Hammond
Yr9 Pastoral Leader

Helen Phillips
Yr11 Pastoral Leader

Jen Pitman/Robyn Smith
Pastoral Admin Officer

Emilie Lawson
Yr10 Pastoral Leader

Andy Buckle
Senior Pastoral Leader

Christine Edge-Sayer
Deputy SENCO/MLD Resourced Provision Lead

Paul Simpson
Attendance Officer

Hayley Baber
Reflection Centre Manager

Tracey Franks
SEND Admin Officer

Sue Almonte
Parental Engagement Officer



Co-op Academy
Bebington

Arrangements for transition.

We have a summer camp for all new starters in Sept. This will happen on Weds 24th- Tues 30th June. Please apply using the letter provided- it is a great opportunity to meet staff and other students

We have spoken extensively to primary schools about your child and have all the relevant background information. We will have some students on site several times for extended transition. Key staff are aware of any issues.

On the transition day- your child will experience lessons and have some time with their form tutors (details on next slide)

We plan to contact selected parents (especially poor attenders) to discuss your child, this is an opportunity to have a quick chat with tutors. The purpose of the call is to allay any fears and answer any questions.

In addition, we have lots of materials on the website- virtual tour, meet the information podcast from the Head-teacher etc. Please refer to this for information updates.



Co-op Academy
Bebington

Induction Day Wednesday 3rd July.

Wear primary school uniform- bring pens etc.

Arrive between 8.30 and 8.40am at the main entrance. Bring a water bottle/sun-cream.

Bring a packed lunch or £3.26 for a hot meal.

Collect students at 2.45pm from the student entrance.



Co-op Academy
Bebington

September arrangements

- 1st day- Weds 4th Sept. 8.30 Yr 7/11- other years the day after.
- Lunches- packed lunch or use the cashless system (info in the booklet)
- School timings- In for 8.30. Registration is at 8.35am we finish at 3.05pm.
- Buses leave at 3.10- 713- Rock Ferry, Port Sunlight, New Ferry. 613- Eastham.
- Eligibility for Free School Meals- will continue if your circumstances have not changed



Co-op Academy
Bebington

Parents' Information- if you're stuck!

- Look on the school website
- Social media Facebook, X (Twitter) and Instagram
- Parent Mail
- Parents' Handbook (copy sent in post but on website)
- Main Office- 0151 645 4154
- Pastoral team- Mr Hawkins Yr7 Pastoral Leader.

michael.hawkins@coopacademies.co.uk

ALL OF THIS INFORMATION IS ON THE WEBSITE



Co-op Academy
Bebington

Ms Sally Spencer

Assistant Head Teacher and Special Educational
Needs Co-ordinator

All communication to bebi.send@coopacademies.co.uk

- AHT/SENDCo: Ms Spencer
- Deputy SENDCo: MLD Base Lead - Mrs Edge-Sayer
- HLTA: Transition, Nurture and Referrals - Mrs Maddocks
- Team of 20 highly experienced Teaching Assistants - Dyslexia, ELKLAN, ELSA, BSL, SALT, Year Group TA, Supported Teaching Groups
- EHCP's and SEN Support = Passport and Keyworker supporting teachers to ensure inclusive ethos in all lessons



Co-op Academy
Bebington

OFSTED

- Recently Leaders have made significant improvements to their provision for pupils with SEND across the school
- Pupils with SEND are identified quickly and effectively
- Teachers receive helpful information about the needs of pupils with SEND
- All pupils, including those with SEND benefit from an ambitious and carefully designed curriculum



Co-op Academy
Bebington

Medical

- Please ensure any medication/inhalers are handed to school before 4th September
- All medication must be clearly labelled and in the original packaging
- Please ensure ALL medical conditions have been communicated to us and if anything changes this is also communicated.



Co-op Academy
Bebington

Mr Mike Hawkins

Pastoral Leader & Progress Leader



Co-op Academy
Bebington

My role as Pastoral/Progress Leader

As Pastoral Leader for Year 7, I will ensure students cope with the transition from primary to secondary school. My main role is to oversee the year group on a daily basis, which includes;

- Monitoring Attendance Behaviour & Punctuality
- Safeguarding & support students who may have any concerns in school.

As Progress Leader, I will work to monitor and track student progress academically;

- Ensuring students are placed in the correct classes to develop their understanding and challenge them academically
- Organising early support in English and Maths, if needed.



Co-op Academy
Bebington

What support do we offer?

- English and Maths intervention: small group work sessions to improve students' confidence
- Reading intervention: we offer 1:1 and small group support to allow students to access the reading levels required across all subjects
- Form Tutoring Mentoring: students who are not quite meeting their targets in English, Maths, Science and/or other EBACC subjects will have the opportunity to get back on track with the help of their Form Tutor
- Progress Leader Mentoring: students who are not quite meeting their targets can be mentored by their Progress Leader
- Homework club are offered in many subject areas and run mainly after school
- Handwriting and social skills clubs: Star wars club, lego club, Cooking club





Co-op Academy
Bebington

How can you help to support your child, our students?

- **Support them to be equipped for school each day:** pen (plus a spare), pencil, ruler and a planner that is used and signed weekly by home (it's a great tool to communicate with your child's Form Tutor). Students are welcome to have a bottle of water in lesson.
- **Keeping an eye on Arbor & Google Classroom:** encouraging homework completion, praising positive points and challenging negative behaviour points, being aware of any detentions set by staff.
- **Keeping your details up to date** (phone number and email address) and signing up to our Parent Mail system.
- **Encouraging your child to keep reading** – we so often see students who were avid readers in Year 6 get out of the habit through secondary school despite it being essential for their progression in all subjects.
- **Attend Parents' Evenings** – Form Tutor settling in meeting in **October 2024**. Progress day with teachers in **July 2025**.





Co-op Academy
Bebington

Rewards



- Positive points available each lesson via Arbor
- Points can be 'spent' on rewards including canteen queue jumps, stationery and donations to our school charities
- Invites to our Celebration of Achievement evening each October (reflective of student progress and attitude from previous year)
- 'Good News Postcards' sent to home addresses
- End of term activities and trips (inflatables, Alton Towers)
- Prizes given in celebration assemblies
- Progress and attainment certificates





Co-op Academy
Bebington

I DID MY VERY
BEST
AND THAT IS THE
BEST
THAT I CAN DO