

LATEST NEWS

Cool Climate Challenge Winners: Heswall Primary



It was great to see so many schools attending this year's Cool Climate Challenge, hosted by last year's winners, Grove Street primary. The challenge given to schools was to raise awareness around air quality. The winners this year were Heswall Primary with their fantastic anti-idling campaign idea!

All schools that took part will be given a £250 grant from Public Health to pilot their campaign idea and share with other schools at next year's Clean Air Day event.

SPOTLIGHT ON... Air Quality

What is Air Pollution and where does it come from?

- Air pollution is the presence of substances in the air that are harmful to our health. They can be gases, small particles or chemicals
- You can't see it, but air pollution is all around us.
- Main sources of outdoor air pollution:
 - **Natural sources** include forest fires, sandstorms, sea salt, dust, pollen and volcanic eruptions.
 - **Human made sources** include emissions from vehicle exhausts, industrial process, energy generation, farming activities and construction of buildings.
- The main source of pollution around schools is usually from vehicle exhausts, peaking at drop off and pick up times.



Did you know that.....?

- air pollution is linked to around 30,000 deaths annually in the UK, costing the NHS and economy over £27 billion per year
- long-term exposure to air pollution can impair brain development in children and increase the risk of cognitive decline in adults
- UK air pollution targets are up to 4 times weaker than what the World Health Organisation recommends
- short term exposure to increased levels of air pollution (hours – days) can cause a range of health impacts, including exacerbation of asthma, increases in hospital admissions for respiratory and cardiovascular issues
- long-term exposure to air pollution (over years or lifetime) reduces life expectancy, mainly due to cardiovascular and respiratory disease and lung cancer

SPOTLIGHT ON...



Things you can do to reduce air pollution

What can you do to reduce pollution?

- Healthy air art installation
- Encourage active travel
- Promote a general air pollution and health campaign
- Promote green journeys / green routes?
- Promote turning off engines when parked?
- Parent surveys / car counting / pledges re behaviour change.



Waste Competition Winner: Weatherhead High

Runners up: St Peter and Pauls and Dawpool Primaries

Well done to our winner
Weatherhead High and
runners up for their amazing
work on waste!



WILDABOUT MARINE ECO DAY

Eco Schools Day, Thurstaston, by Judith Railton

Weaving willow into fish, that
swim through rain
Fins twitching

Talking whale rescue
Seals, porpoises washed up on
Wirral shores
While Wales is invisible
cloaked in air-held water.
Tales of rescued foxes
On the Green

Little jelly fish flutter,
Recycled pots, plastic-bag tentacles
Find their freedom from The Sidings

Plants gathered, identified
Look closely. See the nettle's needles
The cleavers' sticky-bobs

A model house, a street
Rain pouring down
Water butts, porous surfaces
Mean no flooding

The beach, bleak with a south wind
Children scurry , finding litter
Draw curlew and knot
with stones and seaweed in the sand
Hear of microplastics, eaten by birds

Climb up the green gorge steps
Stream swollen, rushing by
chiff-chaff and blackbird
cow parsley, ferns, dog roses,
Bramble thicket, white trumpets of convolvulus

Tides are explained
Three children - sun, moon, Earth
Revolve

Dens built
Pine cones collected
Sunflowers planted
Flags made.
The air is full
Excited children, interested in all this,
loving being outdoors

....



Wild, Wet and Wonderful

Thank you to everyone who took part in our Marine Day at Wirral County Park! It turned out to be the wettest day ever, but still lots of opportunities to find out about water based careers, environmental volunteering and making some art about it. Here are some highlights...

Somerville Primary School



Cathcart Street Primary

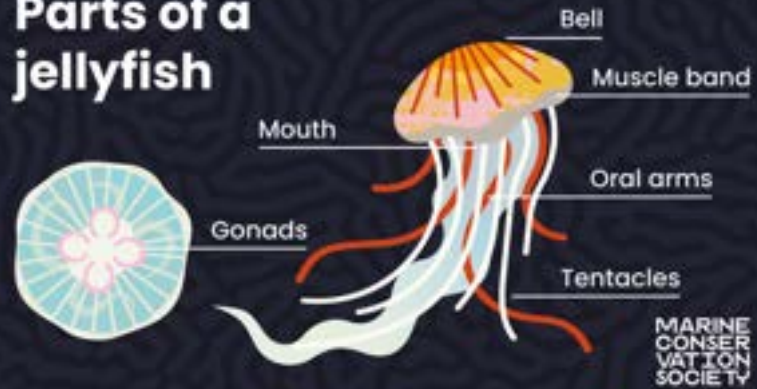




Jellyfish

Lynn Struve

Parts of a jellyfish



MARINE CONSERVATION SOCIETY

Barrel jellyfish

(*Rhizostoma octopus*)

Large mushroom-shaped bell

No tentacles around the muscle band

Eight oral arms



Can be white, pink, blue or yellow and fringed with purple markings

MARINE CONSERVATION SOCIETY



Location

Found all around the UK, but one particularly common in the south-west

Time of year

J A M A M I
J A S O N D

Sting

Mild

Fun facts:

- Actively alive or semi-alive from July until early in the winter
- Swarm-like feeding behaviour. They depend on their tentacles to eat about 10-20 a day
- Due to their size, they're sometimes called 'cannon jet jellyfish'

By the wind sailor

(*Velella velella*)

Not a jellyfish! It's a floating, solitary hydrozoan (a colony of animals live underneath the float, each with a different role to play including feeding, reproducing and protecting)

They have a diagonal fin which acts like a sail in the wind

Blue, structured float



Up to 10cm

MARINE CONSERVATION SOCIETY

Short feeding tentacles underneath, which they use to catch small fish



Location

Normally in warm open waters, they can be washed up on the UK during stormy weather

Time of year

J A M A M I
J A S O N D

Sting

Mild

Fun facts:

- Have one 'left-handed' (left side) from top-left to bottom-right) and a same one 'right-handed' (right side) from top-right to bottom-left)
- Scientists think it may be to do with the different wind directions in the northern and southern hemispheres
- Sometimes combined with Portuguese man-of-war

Blue jellyfish

(*Cyanea lamarckii*)



Has visible radial lines on the bell (like the rays of the sun)

Up to 30cm

Four fully oral arms

Normally blue. Look closely: Occasionally, a yellow colour variant also appears in the UK

MARINE CONSERVATION SOCIETY



Location

Found all around the UK

Time of year

J A M A M I
J A S O N D

Sting

Mild

Fun facts:

- Closely related to and often confused with the brownish jellyfish - blue jellyfish sea anemone
- Can be confused with a shrimp, where they feed on plankton

Lion's mane jellyfish

(*Cyanea capillata*)

Usually up to 50cm, but can reach 2m wide

Yellow, brown, or red saucer-shaped bell



MARINE CONSERVATION SOCIETY



Huge mass of long thin tentacles, some short, thick, filled oral arms



Location

Most commonly found in northern UK seas

Time of year

J A M A M I
J A S O N D

Sting

Severe

Fun facts:

- The largest one recorded had a bell 30.5m across
- Part of the diet of water-bear turtles

Compass jellyfish

(*Chrysaora hysoscella*)

Up to 30cm



24 long thin tentacles around the muscle band

Four long-filled oral arms

Can be clear, yellow or brown, with darker v-shaped markings on the bell

MARINE CONSERVATION SOCIETY



Location

Found all around the UK

Time of year

J A M A M I
J A S O N D

Sting

Mild

Fun facts:

- Often fly, but have a surface and swim
- They are sometimes used to eat small fish and other jellyfish
- Change from clear to brown as they mature

Moon jellyfish

(*Aurelia aurita*)

Up to 40cm



MARINE CONSERVATION SOCIETY

Round, clear, saucer-shaped bell

Short hairlike tentacles

Four short-filled oral arms

Four distinct purple gonad rings in the bell



Location

Found all around the UK. The most common jellyfish we see!

Time of year

J A M A M I
J A S O N D

Sting

Mild

Fun facts:

- A favourite of water-bear turtles, often seen in harbours, estuaries or sea lochs in Scotland

Mauve stinger jellyfish

(*Pelagia noctiluca*)

Up to 10cm



Purple coloured bell with dark warts, which can also sting

Four filled oral arms with pink spots

Eight long tentacles around the muscle bands

MARINE CONSERVATION SOCIETY



Location

Less common, but tend to be found around the south-west coast of the UK

Time of year

J A M A M I
J A S O N D

Sting

Severe

Fun facts:

- They are common around the UK
- Huge numbers have been seen in the UK
- They are common around the UK

Portuguese man o' war

(*Physalia physalis*)

Not a jellyfish! It's a floating colony of hydrozoans (a group of animals, like sponges) that are linked. Some stick out at different levels to play a feeding, reproducing and protecting role

Up to 40cm



MARINE CONSERVATION SOCIETY

Oval shaped, transparent float with a sail-like crest on the top

Long hanging jellyfish (like jellyfish tentacles)

Blue-purple in colour



Location

Less common, most likely to be found washed up on beaches on the west coast of the UK. If you're in numbers, you should report to the local authorities

Time of year

J A M A M I
J A S O N D

Sting

Severe

Fun facts:

- The air-filled float can be inflated to escape surface attacks
- Their cells are so small, the whole organism can fit through the smallest holes

GET INVOLVED



Garden butterflies



Peacock



Brimstone



Comma



Orange-tip



Green-veined white



Holly blue



Small tortoiseshell



Painted lady



Red admiral



Small white

www.wildlifewatch.org.uk

Credits: Peacock, Comma, Painted lady and Red admiral (c) Richard Surleson / Brimstone (c) Neil Philips / Orange-tip and Small White (c) Les Bess / Green-veined white (c) Mike Swadlow / Holly blue (c) Philip Tristram / Small tortoiseshell (c) Neil Aldridge

Shoreline detective

Please do not remove anything from the beach that may be alive, or may act as a home for wildlife.



Seaweed



Mermaid's purse



Cockle shell



Pebbles



Oyster shell



Cuttiefish bone



Driftwood



Whelk eggs



Whelk shell



Gull feather

www.wildlifewatch.org.uk

Seaweed, pebbles, oyster shell & driftwood (c) Sarah Wynne / Mermaid's purse (c) Paul Naylor / Cockle shell (c) Stan Roberts / Cuttlefish bone (c) aSMUJAter - flickr / Whelk eggs (c) gazzat - flickr / Whelk shell (c) Amy Lewis / Gull feather (c) NicoledaB - flickr

BOOKS OF THE MONTH



Wirral Libraries recommendations:



The BBC Earth range of children's books offers an exciting window into the natural world, bringing fascinating wildlife, environments and scientific discoveries to life for young readers. With stunning photography, clear explanations and engaging facts, these books capture children's imaginations while supporting curriculum learning in science and geography. From exploring rainforests and oceans to discovering endangered species and climate change, each title encourages thoughtful discussion about our planet.

Ideal for use in both the classroom and at home, BBC Earth books cater to a wide range of reading ages and abilities, making them accessible and enjoyable for all pupils. They also promote important values such as environmental awareness and responsibility, helping children understand their role in protecting the Earth. By combining education with inspiration, the series nurtures a love of reading, discovery and the natural world.

FIND OUT MORE

To find out more visit the Wild About... section on the Birkenhead Park website.

www.Birkenhead-Park.org.uk

CONTACT US

lynnstruve@wirral.gov.uk





ENVIRONMENTALLY FRIENDLY TIPS FOR YOUR FRONT GARDEN



LET YOUR RAIN, DRAIN

Use less paving for parking and choose permeable paving so rainwater can soak into the ground.

CREATE A RAIN GARDEN

Rain gardens are made with a shallow dip in the ground which are planted up to help soak up heavy rainfall.



COLLECT YOUR RAIN

Plants love rainwater! Add a water butt so you can help slow the flow of rainwater.

PLANT A TREE

Add a small tree and hedge to your front garden so that it can help soak up your rainwater and be a welcoming place for birds.



MAKE SOME MULCH MAGIC

Save your leaves and use them to create mulch. It makes your plants healthier and helps your soil to soak up rain.



WELCOME POLLINATORS

Plant flowers and shrubs to attract bees and butterflies.



MAKE A HOME FOR NATURE

Let your lawn grow longer and create leaf piles so that nature has a safe home in your garden. A small patch can make a big difference!

Scan the QR code to visit the Unpave the Way webpage for more information and ideas, including a full planting list!





What are SuDS?



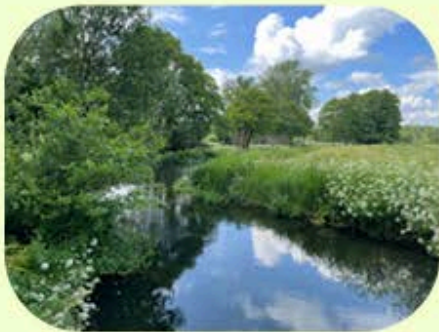
'SuDS' is short for **sustainable drainage systems**

But what does that mean?

SuDS drain areas like nature intended by collecting, storing and draining rainwater at the place where it falls.

They come in all sizes big and small! You may find them at your school, park, neighbourhood, at roadsides or in town centres. You can even have them at your home!

Some look like big ponds! Whilst others look like pretty flower beds.



SuDS are a big help to people and nature

SuDS slow the flow of rainwater from building roofs, driveways and roads. This helps to stop sewers from being overwhelmed by excess rainwater during storms.

This means rivers are less likely to become polluted, making them healthier environments for people and wildlife to enjoy.

When you use SuDS to collect and drain rainwater at home you're also helping to protect homes from flooding.

- ### SuDS have lots of talents!
- Help to prevent flooding
 - Provide habitats for nature
 - Help to cool homes and buildings during summer
 - Filter pollution from surface water
 - Make the air cleaner by trapping dust and pollution
 - Provide calming green spaces for people to relax



SMALL BUT MIGHTY!

Here are some examples of small SuDS which you could have at your school or home!

Water Butt



Stores 42 watering can's of rainwater!

Rain Garden



Slows the flow of rainwater and helps pollinators

Downspout Planter



Stores 67 watering can's worth of rainwater!

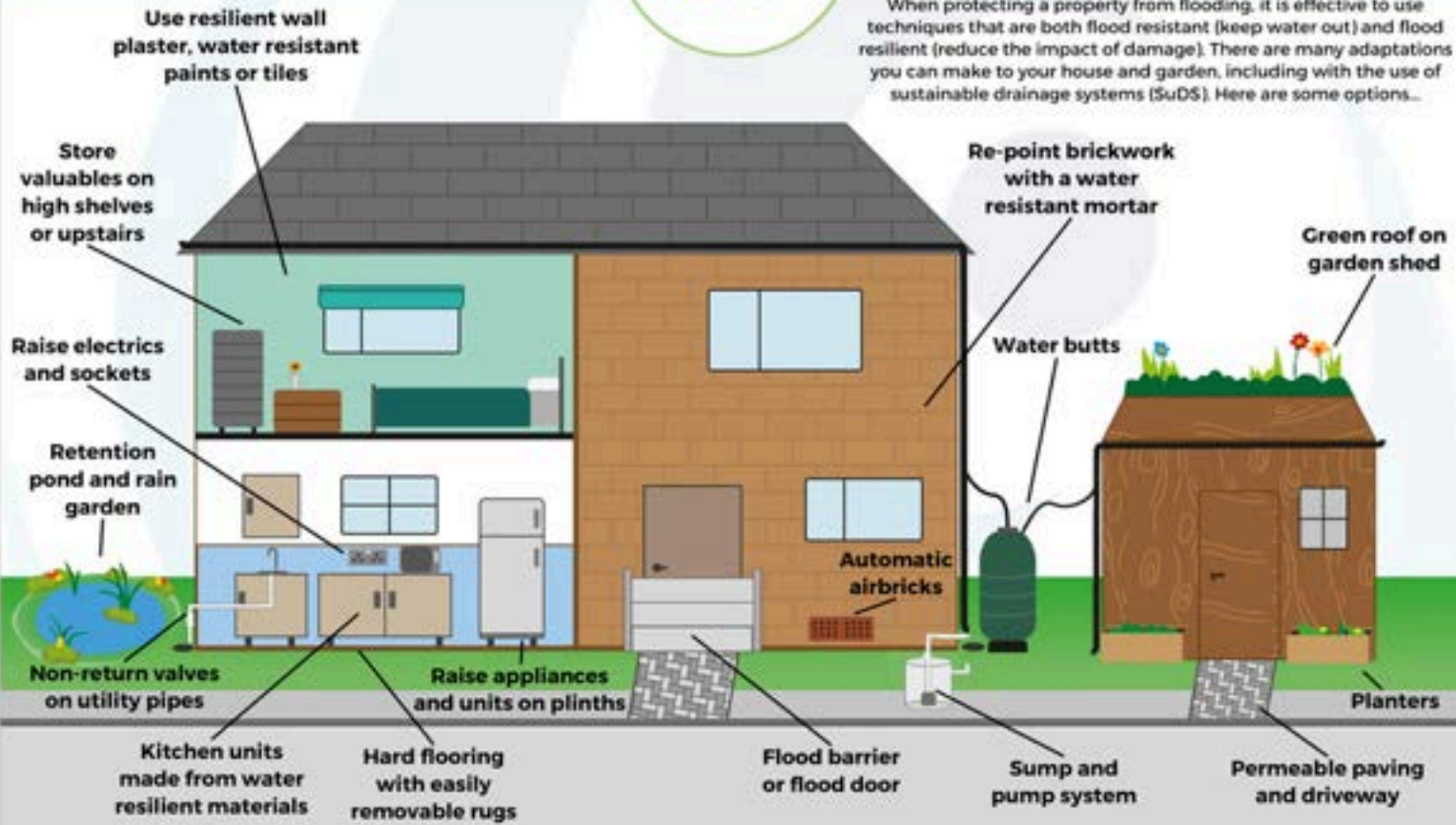
Scan for more info



Flood Resilient House



When protecting a property from flooding, it is effective to use techniques that are both flood resistant (keep water out) and flood resilient (reduce the impact of damage). There are many adaptations you can make to your house and garden, including with the use of sustainable drainage systems (SuDS). Here are some options...



Last reviewed: April 2024
 For more information visit:
www.thefloodhub.co.uk
 @TheFloodHub

Woodlands Primary rainwater garden In Partnership with United Utilities



Bat Walk

Wednesday 29th July 8:15 pm



Join the rangers to explore Ashton Park as the sunsets and look for the bats that love to feed around the pond.

Meeting point: Bowling Green by the pond at Ashton Park.
The walk will begin at 8:15pm
Please support
The Friends of Ashton Park: their cafe will be open from 7pm for refreshments
Booking essential
Please email joanneboots@wirral.gov.uk

Love Parks Week Mini Beast Hunt

26th July 10:30am till 12pm

Join the ranger as we explore Thurstaston Hill looking for mini beasts. We will meet in the car park on Telegraph Road CH61 0HH. All equipment will be provided.
Booking essential



To book email joanneboots@wirral.gov.uk

Sandcastle Competition

Monday 27th July 1:30- 3pm

West Kirby Beach

Come and get creative on West Kirby beach and take part in our sandcastle competition.

Your design can be a sandcastle or a sea themed creation.

Please bring your own buckets and spades.

Booking essential

please email

joanneboots@wirral.gov.uk



LITTER PICK THURSTASTON HILL

JOIN THE RANGERS AS WE EXPLORE THURSTASTON HILL, COLLECTING ANY LITTER WE FIND AS WE GO. ALL EQUIPMENT WILL BE PROVIDED.

THURSDAY 30TH JULY

10:30 - 12PM

MEET AT

THE CAR PARK OFF TELEGRAPH ROAD CH61 0HH

BOOKING ESSENTIAL. PLEASE EMAIL
JOANNEBOOTS@WIRRAL.GOV.UK



What's On

Ranger Led Tree ID

Get to know your trees throughout the seasons in 2026!

Sunday 25th Jan 10-12pm

Saturday 07th Feb 1-3pm

Sunday 19th April 1-3pm

Sunday 9th August 10-12pm (Kids Walk)

Saturday 17th October 1-3pm

Sunday 13th December 10-12pm

Walks start at the Visitor Centre

All abilities and ages welcome

Booking essential

Give us a call on 0151 652 5197 for more info and to secure your place!

Birkenhead Park Visitor Centre, Park Drive, Birkenhead CH41 4HY

#thepeoplesgarden

Birkenhead Park

Birkenhead Park

Junior Rangers Love Parks Week

Join us at the Visitor Centre for a morning celebrating our park with fun crafts!

**Friday 24th July
10.30am - 12pm**

Activities suitable for ages 3+
Children must be accompanied by an adult.

FREE

Booking essential:
birkenheadpark@wirral.gov.uk
or call 0151 652 5197

LOVE
PARKS

KEEP
BRITAIN
TIDY.

Birkenhead Park

FREE

Art in Nature Walk

Experience Birkenhead Park through a blend of art and nature on this Ranger-led walk. Part of Love Parks Week.

Friday 31st July at 10.30am

Start at the **Visitor Centre**

Family friendly event. Suitable for ages 3+
Well-behaved dogs welcome.

Booking essential:
birkenheadpark@wirral.gov.uk
or call 0151 652 5197

What's On

Ranger-Led History Walks 2026

Come along for a guided stroll around Birkenhead Park with one of our Rangers

Saturday 30th May 1-3 pm

Saturday 27th June 10-12 pm

Sunday 26th July 10-12 pm

Saturday 19th September 1-3 pm

Walks start at the Visitor Centre

All abilities and ages welcome

Booking essential

To secure your place

Call us on 0151 652 5197

Email: birkenheadpark@wirral.gov.uk

Visit our website: birkenhead-park.org.uk

Like us on Facebook: www.facebook.com/BirkenheadPark

Birkenhead Park Visitor Centre, Park Drive, Birkenhead CH41 4HY

#thepeoplesgarden

Birkenhead Park